

iHome®

Model iP9
The Home System
For Your iPhone or iPod®

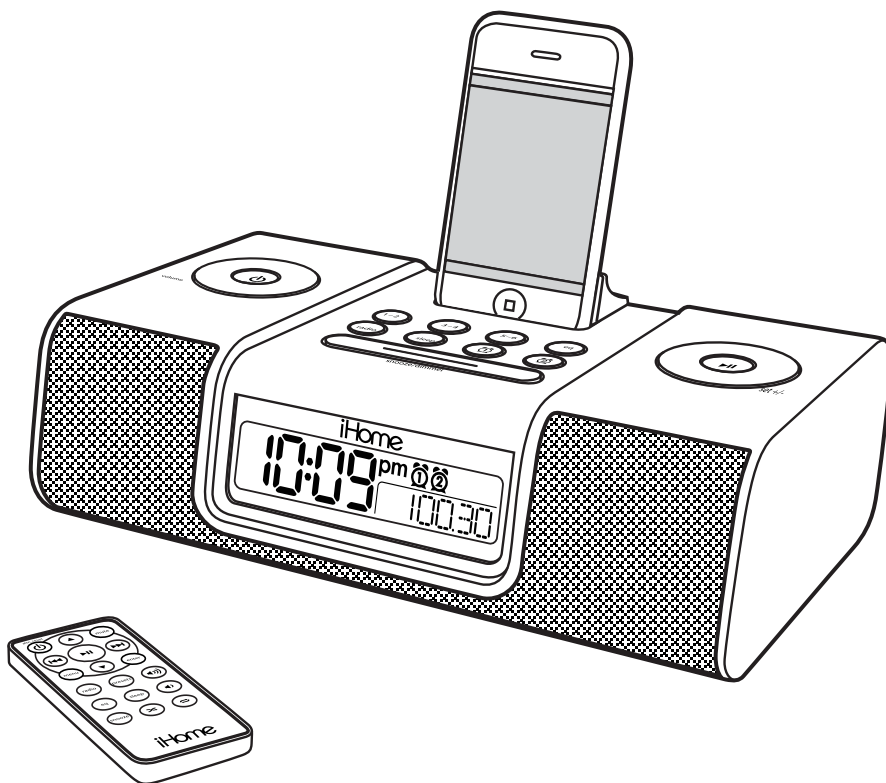


Table of Contents

Quick Start	1
Controls and Indicators / iP9 display	2-3
Using the iP9.....	3-5
Replacing iP9 Backup Batteries	5
Using the Remote Control	6
Install/Replace Remote Control Battery	
Troubleshooting	7-8
A Consumer Guide to product Safety	9



This product bears the selective sorting symbol for waste electrical and electronic equipment (WEEE).

This means that this product must be handled pursuant to European Directive 2002/96/EC in order to be recycled or dismantled to minimize its impact on the environment.



For further information, please contact your local or regional authorities.

Electronic products not included in the selective sorting process are potentially dangerous for the environment and human health due to the presence of hazardous substances.

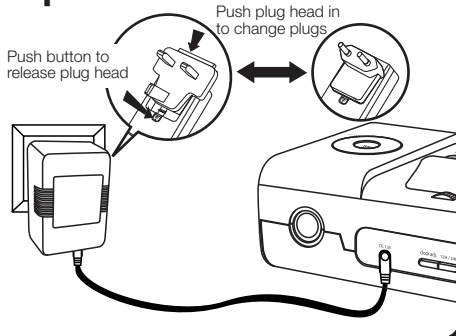
Maintenance

Maintenance

- Place the unit on a level surface away from sources of direct sunlight or excessive heat.
- Protect your furniture when placing your unit on a natural wood and lacquered finish. A cloth or other protective material should be placed between it and the furniture.
- Clean your unit with a soft cloth moistened only with mild soap and water. Stronger cleaning agents, such as Benzene, thinner or similar materials can damage the surface of the unit.

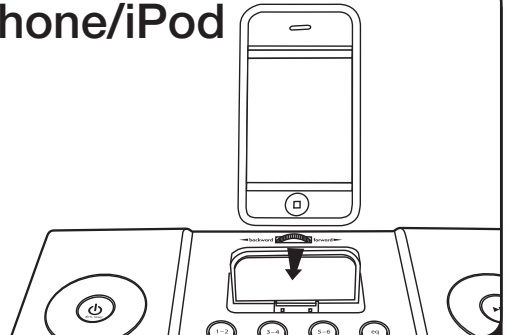
iP9 quick start

1:power



Attach AC adaptor cable to jack on back of the iP9 and plug the other end into a working wall socket.

2:iPhone/iPod



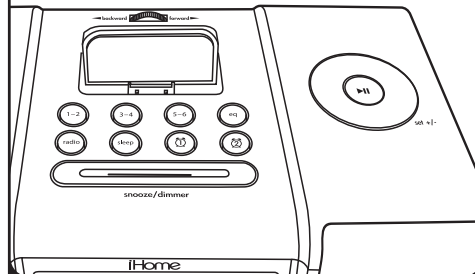
Gently insert your iPhone or iPod into the dock (iPhone/iPod must not be in a skin or case). Turn the dock adjustment knob until the iPhone/iPod is held firmly in place (do not overtighten). The iPhone/iPod will charge while docked. Press the Play/Pause Button on the iP9 to play your iPhone/iPod.

3:time



- Press & hold the 12h/24h button to switch between 12 and 24 hour time display
- Press & hold the Clock Adj Button on back until the display flashes
- Turn the Set Wheel to set the time. Press Clock Adj again.
- Turn the Set Wheel to set the year. Press Clock Adj again.
- Turn Set Wheel to adjust the date. Press Clock Adj again to complete clock setting.

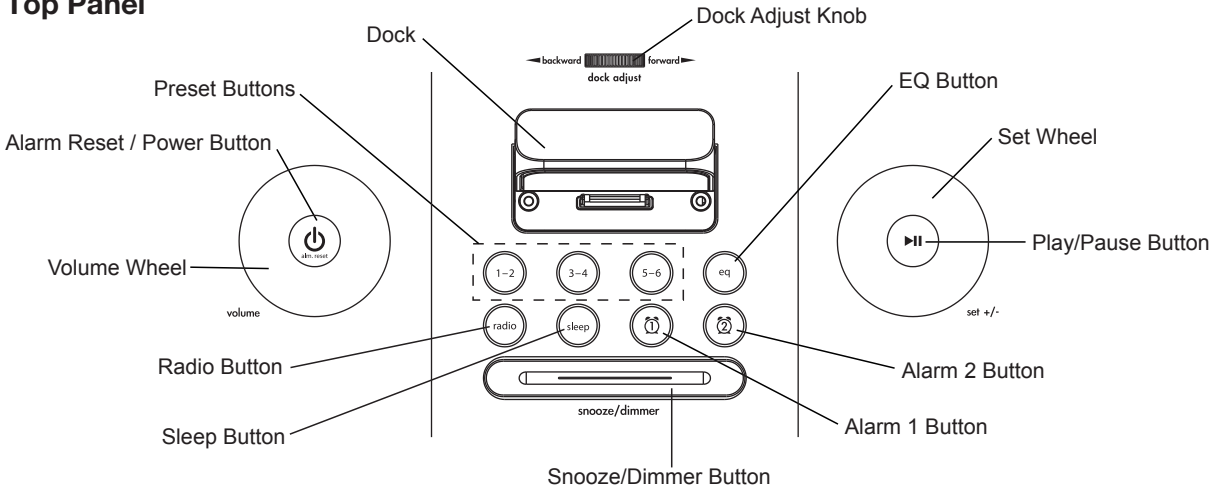
4:radio



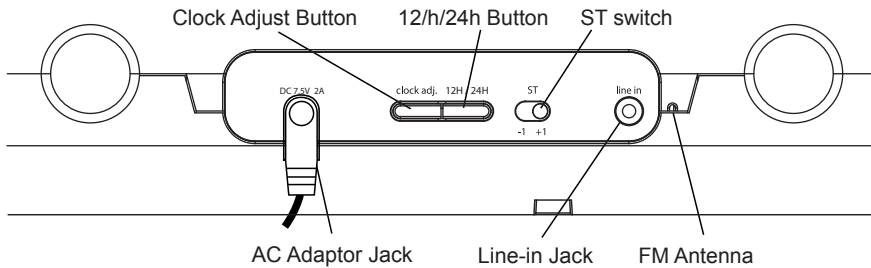
Press the Radio button to select radio mode. Turn the Set Wheel to tune in a station. See page 4 for programming presets.

Controls and Indicators

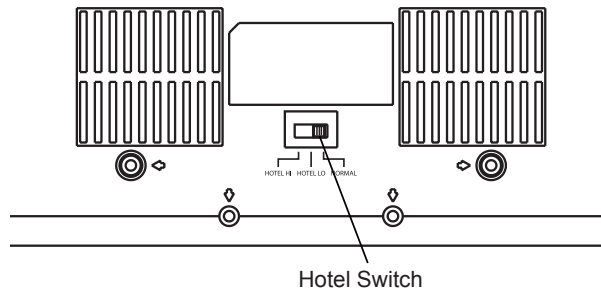
Top Panel



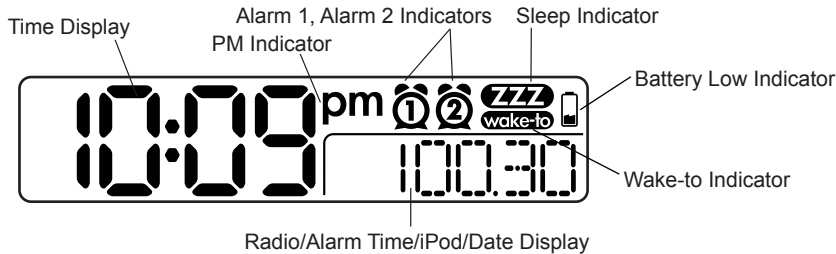
Rear Panel



Bottom View



iP9 display



Using the iP9

Connect iP9 to Power Source

Plug the AC adaptor cable into the **AC Adaptor Jack** and the other end into a standard 100-240 VAC wall socket. Adaptor must be plugged in to operate. **The iP9 does not operate on batteries.**

Using the Hotel Switch

The iP9 has a 3 position switch on the bottom of the unit. For regular home use, keep the switch in Normal position. Hotel Low lowers the output of the unit and Hotel High maintains regular output. While in either Hotel mode:

- Clock adjust and 12h/24h buttons are disabled
- Radio presets can be accessed, but not programmed
- Alarms operate as single day alarms (will not automatically come on the next day even if Alarm Reset is pressed), 7-5-2 operation is disabled, and wake to playlist is disabled
- The remote control sensor is disabled

Setting the Clock Time

Time Display Options

- Press the 12H/24H Button at any time to toggle between displaying the time in 12 hour (AM and PM) mode or 24 hour mode

Setting the Clock

- Slide the **ST switch** to adjust for Summer Time (+1 for Summer time, -1 for Standard time).
- Press and hold the **Clock Adjust Button** located on the back of the unit. The clock display will flash.
- Turn the **Set Wheel** until the current time is displayed (in 12 hour display mode, a PM indicator appears when time is set to PM; there is no AM indicator).
- Press the **Clock Adjust Button** to accept the time. The year display will flash.
- Turn the **Set Wheel** to adjust the year and press the **Clock Adjust Button**. The date display will flash.
- Turn the **Set Wheel** to adjust the date and press the **Clock Adjust Button**. Two beeps will indicate clock setting is complete.

Using the Alarms

The iP9 has two independent alarms. Each can be set to wake you to iPod (iPhone), iPod (iPhone) playlist, radio or buzzer at separate times.

Setting the Alarms

- Press and hold the **Alarm 1** or **Alarm 2 Button** until the alarm time flashes.
- Turn the **Set Wheel** to set the desired alarm time.
- Press the **Alarm Button** again and turn the **Set Wheel** to select having the alarm come on all week (7 days), only weekdays (5 days) or just weekends (2 days).
- Press the **Alarm Button** again and then turn the **Set Wheel** to select a wake source: Buzzer, iPod (iPhone), iPod (iPhone) playlist* (PLYLST) or Radio (last selected station).

* **PLYLST**. To wake to an iPhone/iPod playlist, you must create a playlist in iTunes called 'iHome' and import it to your iPhone/iPod. When PLYLST is set as your wake to source, the iP9 will wake to random songs in your iHome playlist.

Note: If wake to source is set to iPod (iPhone) or playlist and iPhone/iPod or playlist is not present, the iP9 defaults to buzzer alarm.

Arming and Disarming Alarm (Turn Alarm Function ON and OFF)

- Press an **Alarm Button** to preview current alarm time(s). Press again to arm or disarm alarm function. When armed, the related alarm icon appears in the display.

Resetting the Alarm to Come on the Next Day

- When the alarm is sounding, press the **Alarm Reset/Power Button** to stop the alarm and reset it to come on the following day.

Snooze

- Press the **Snooze/Dimmer Button** after the alarm sounds. The alarm will be silenced and come on again after the selected snooze time. Snooze can be pressed several times during the 2 hour alarm cycle.
- To adjust the snooze time, during normal mode press and hold the **Snooze/Dimmer Button** until the display flashes. Use the **Set Wheel** to adjust snooze time from 1 to 29 minutes.

Sure Alarm

The iP9 has a sure alarm feature so the buzzer alarm will still sound in the event of power failure, if backup batteries are installed.

iPhone/iPod

Playing and charging your iPhone or iPod

- Gently dock your iPhone/iPod, then turn the Dock Adjust Knob until the iPhone or iPod is held firmly in place. When docked, your iPhone/iPod will charge until fully charged. **Unit will not overcharge** iPhone/iPod.
- Press the **Play/Pause Button** to play iPhone/iPod, and again to pause. If your iPhone or iPod Touch is in video mode, you may see the "locked" slider on the iPhone/iPod display. If so, you will need to unlock your iPhone/iPod.
- Turn **Volume Wheel** to adjust iP9 volume up or down
- Press the **EQ Button** to select Treble, Bass, 3D sound effect or Balance. Turn the **Set Wheel** to adjust settings. EQ settings for iPhone/iPod and radio mode are independent.
- Press **Alarm Reset/Power Button** to turn iP9 and iPhone/iPod off.

Note: If you dock an iPhone/iPod with a drained battery, it may take up to 6 minutes of charging before the iPhone/iPod will respond.

Radio

Setting up Antenna

- Extend **FM Antenna** (on back of unit) fully for best reception. Do not strip, alter or attach to other antennas.
- Locate iP9 and FM antenna away from AC adaptor in wall socket (at least 3 feet) for best radio reception

Tuning and Playing the Radio

- Press the **Radio Button** to select FM radio play mode.
- Turn the **Set Wheel** to tune radio to a desired station.
- To program the current station as a preset, press and hold **Preset Button 1-2** until P1 flashes on display; press again for P2 and allow to time-out (beep confirmation). Repeat steps a,b,and c for other preset buttons to preset up to 6 FM stations. To listen to a preset station at any time, simply press the desired preset button once or twice.
- Turn the **Volume Wheel** to adjust iP9 volume up or down.
- Press the **EQ Button** to select Treble, Bass, 3D sound effect or Balance. Turn the **Set Wheel** to adjust settings. EQ settings for iPhone/iPod and radio mode are independent.
- Press the **Alarm Reset/Power Button** to turn iP9 off.

Using the iP9

Using the Line-in Jack

- You can play nondocking iPod models or other audio devices through the iP9 **Line-in Jack**, connect one end of a patch cord in the device's line out or headphones jack, the other in the iP9 line-in jack. Make sure there is no iPhone/iPod docked in the iP9 when using the line-in jack.
- To listen to your audio device, press the **Radio Button** until "line-in" is displayed, indicating line-in mode. Adjust the output volume on your line-in device.

Using Sleep Mode

Sleep mode lets you sleep to your iPhone/iPod or the radio, gradually lowering the volume until the unit shuts off at the selected time.

- Press the **Sleep Button** to select an amount of time before the iP9 shuts off: 120, 90, 60, 30 or 15 minutes.
- Turn the **Volume Wheel** to set the sleep volume (this volume setting is separate from your standard volume setting).

Using the Dimmer

- Press the **Snooze/Dimmer Button** during normal operation to adjust brightness of LCD display. There are 8 levels of brightness including OFF.

Replacing iP9 Backup Batteries

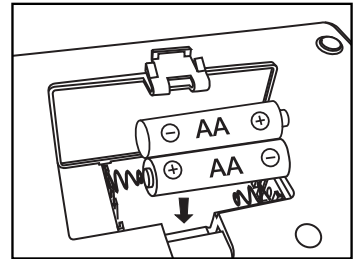
Install/Replace Backup Battery

The iP9 uses a backup battery system to provide continuous alarm operation and clock settings in the event of a power failure. If the Battery Low Icon located on the right of the display is on, it is time to replace the backup batteries. Please make sure the AC adaptor is connected, otherwise all settings may be lost during battery replacement.

Open the battery compartment cover located on the bottom of the unit. Insert 2 "AA" batteries as indicated. **We recommend the use of alkaline batteries for longer life.**

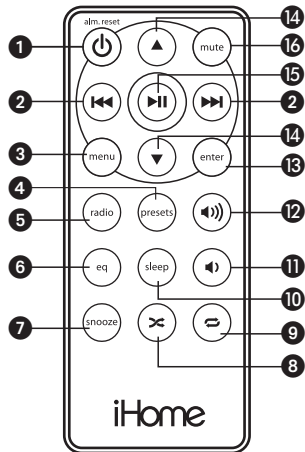
Batteries information:

- Do not mix old and new batteries.
- Do not mix alkaline, standard (carbon -zinc) or rechargeable (nickel-cadmium) batteries.



Using The Remote Control

The Remote Control controls basic functions on the iP9 and certain iPhone/iPod functions when the iPhone/iPod is docked in the iP9. For best results, use the remote control within 12 feet of the unit.



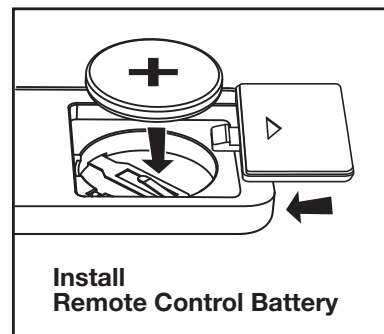
- 1 Power On/Off Alarm Reset Button: Turns iP9 ON or OFF or resets alarm when alarm is sounding
- 2 Fwd/Rev Button: Skip to previous or next track, or HOLD to scan current playing track; Also controls set wheel functions (changing settings, tuning radio, etc.)
- 3 Menu Button: Press to access iPhone/iPod Menu functions
- 4 Preset Button: Cycles through FM radio presets
- 5 Radio Button: Selects FM Radio and line-in functions
- 6 EQ Button: Set Treble, Bass, 3D sound effect and Balance settings for best sound
- 7 Snooze/Dimmer Button: Snooze mode when alarm sounds, otherwise dims display
- 8 Random Button: Press for random play
- 9 Repeat Button: Press for repeat play (press again to repeat all)
- 10 Sleep Button: Press to select an amount of time before the iH9 shuts off: 120, 90, 60, 30 or 15 minutes
- 11 Volume – Button: Lowers volume level
- 12 Volume + Button: Raises volume level
- 13 Enter Button: Press to select iPhone/iPod menu function
- 14 Up/Down Button: Press Up or Down to scroll iPhone/iPod menu
- 15 Play/Pause Button: Plays track. In play mode, press to pause
- 16 Mute Button: Toggles sound ON or OFF

Installing/Replacing the Remote Control Battery

The remote control battery is already installed at the factory. When the remote control stops operating or its range seems reduced, it is time to replace the battery with a new one.

1. The battery door is located on the back end of the remote.
2. Slide the battery door open and remove old battery.
3. Insert a CR2032 battery, checking that the + and – sides of the battery match the drawing inside the battery compartment.
4. Replace the battery door.

Note: Make sure you dispose of all batteries properly (see your local regulations).



Troubleshooting

Symptom	Possible Problem	Solution
iP9 does not turn on	AC adaptor isn't plugged into a working wall socket or not plugged into the power supply jack on back of the unit	Plug the AC adaptor into a working wall socket and plug the connector into the supply jack on the unit
iP9 doesn't respond	iP9 requires a reset	If unit is plugged in and doesn't respond, try resetting the unit by following these steps: a) remove iPhone/iPod from dock b) unplug unit from power source c) remove back up batteries d) wait 1 hour, then resume use
	iPhone/iPod is not docked properly	Remove your iPhone/iPod from the dock and check for obstruction on the connectors in the dock and on your iPhone/iPod. Then reseal it in the dock.
Battery Low icon always on	Batteries are weak	Replace with new batteries
	Batteries were not installed properly	Check to make sure the polarity (+ and – ends) matches the diagram in the battery compartment
iPhone/iPod does not respond to the unit/ iPhone/iPod is playing but no sound comes out	iPhone/iPod is not docked properly	Remove your iPhone/iPod from the dock and check for obstruction on the connectors in the dock and on your iPhone/iPod. Then reseal it in the dock.
	Your iPhone/iPod software is too old	Upgrade software on your iPhone/iPod. For details visit http://www.apple.com or use iTunes on your computer
	iPhone/iPod is locked up/plays but no sound comes out	Check the volume setting. Make sure your iPhone/iPod is working properly before docking into the unit. Please refer to your iPhone/iPod manual for details. See above for software upgrade information. You may need to reset your iPhone/iPod. Refer to your iPhone or iPod user guide for details on how to perform a reset.
	Using 1 st or 2 nd generation iPod, iPod Shuffle or other devices.	iP9 cannot control those iPod models or other devices.
Remote Control didn't work	Battery weak	Replace current battery with new battery
	Remote Control is out of range of the iP9 remote sensor	Move within 30 feet of the unit.
	Hotel switch is activated	Make sure Hotel switch is in Normal position
iP9/iPhone/iPod performance is erratic	The iP9 is reacting to external interference	Move unit away from potential sources of external interference such as computers, modems, wireless devices (routers) or fluorescent light.
No sound from iP9	Volume is set too low on iP9	Make sure volume is turned up
iPhone/iPod didn't charge up	iPhone/iPod is not docked properly	Remove your iPhone/iPod from the dock and check for obstruction on the connectors in the dock and on your iPhone/iPod. Then reinsert it in the dock.
	iPhone/iPod is locked up/ frozen	Please make sure your iPhone/iPod is working properly before docking into the unit. Please refer to your iPhone/iPod manual for details.
	iPhone/iPod battery has problem	

Troubleshooting

Symptom	Possible Problem	Solution
FM radio is very noisy	FM antenna or unit not located properly	Keep FM antenna and unit at least 3 feet away from AC adaptor
Unit makes odd beeping noise in radio mode	GSM noise: iPhone is sending signals to cell towers	Undo your iPhone or put iPhone in Airplane mode. Note that Airplane temporarily disables the phone features on the iPhone.
Sound is distorted	Volume level is set too high	Decrease the volume
	Sound source is distorted	If the iPhone/iPod original sound source (MP3) is old or of poor quality, distortion and noise are easily noticed with high-power speakers. Try a different audio source such as a music CD. If you are using an external sound source like older generation of iPod or iPod Shuffle, try reducing the output volume on the device itself. Also try turning bass boost OFF.
	EQ settings are too high	Lower EQ settings and/ or turn off SRS WOW
Unit/adaptor gets warm after extended play at high volume	This is normal	Turn unit off for awhile or lower volume
Snooze time is too long/short	Custom snooze time not set	Press and hold Snooze button then turn set wheel to adjust
Can't wake to playlist	Playlist is misnamed or empty	Sync iPhone/iPod to iTunes and manually label playlist iHome . Make sure to add songs to your playlist. For help in creating a playlist, please see the Help tab in iTunes or visit www.apple.com
	Hotel switch is activated	Make sure Hotel switch is in Normal position
Alarm not working	AM/PM time/alarm time not set correctly	When setting clock or alarm time, take note of the PM indicator; there is NO AM indicator
	Alarm time or source selected for alarm 2 , not alarm 1 or vice versa	Make sure to set the alarm time and source for the alarm icon 1 or 2 that is shown on the clock display
	7-5-2 days setting is not correct	7 days is the every day alarm, 5 days is Mon-Fri, and 2 days is Sat-Sun. See page 4 for setting alarms.
	Calendar is not set correctly, which can affect 7/5/2 day alarm operation	See page 3 for setting Clock/Calendar Section.
	Hotel switch is activated	Make sure Hotel switch is in Normal position

IMPORTANT SAFETY INSTRUCTIONS

When used in the directed manner, this unit has been designed and manufactured to ensure your personal safety. However, improper use can result in potential electrical shock or fire hazards. Please read all safety and operating instructions carefully before installation and use, and keep these instructions handy for future reference. Take special note of all warnings listed in these instructions and on the unit.

1. **Water and Moisture** – The unit should not be used near water. For example: near a bathtub, washbowl, kitchen sink, laundry tub, swimming pool or in a wet basement.
2. **Ventilation** – The unit should be situated so that its location or position does not interfere with its proper ventilation. For example, it should not be situated on a bed, sofa, rug or similar surface that may block ventilation openings. Also, it should not be placed in a built-in installation, such as a bookcase or cabinet, that may impede the flow of air through the ventilation openings.
3. **Heat** – The unit should be situated away from heat sources such as radiators, heat registers, stoves or other appliances (including amplifiers) that produce heat.
4. **Power Sources** – The unit should be connected to a power AC adaptor of the type described in the operating instructions or as marked on the appliance.
5. **Power-Cord Protection** – Power AC adaptor cords should be routed so that they are not likely to be walked on or pinched by items placed upon or against them. It is always best to have a clear area from where the cord exits the unit to where it is plugged into an AC outlet.
6. **Cleaning** – The unit should be cleaned only as recommended. See the Maintenance section of this manual for cleaning instructions.
7. **Objects and Liquid Entry** – Care should be taken so that objects do not fall and liquids are not spilled into any openings or vents located on the product.
8. **Attachments** – Do not use attachments not recommended by the product manufacturer.
9. **Lightning and Power Surge Protection** – Unplug the unit from the wall outlet and disconnect the antenna or cable system during a lightning storm or when it is left unattended and unused for long periods of time. This will prevent damage to the product due to lightning and power-line surges.
10. **Overloading** – Do not overload wall outlets, extension cords, or integral convenience receptacles as this can result in a risk of fire or electric shock.
11. **Damage Requiring Service** – The unit should be serviced by qualified service personnel when:
 - A. the power supply cord or plug has been damaged.
 - B. objects have fallen into or liquid has been spilled into the enclosure.
 - C. the unit has been exposed to rain.
 - D. the unit has been dropped or the enclosure damaged.
 - E. the unit exhibits a marked change in performance or does not operate normally.
12. **Antenna** – Do not connect an external antenna to the unit (other than that provided).
13. **Periods of Nonuse** – If the unit is to be left unused for an extended period of time, such as a month or longer, the power cord should be unplugged from the unit to prevent damage or corrosion.
14. **Servicing** – The user should not attempt to service the unit beyond those methods described in the user's operating instructions. Service methods not covered in the operating instructions should be referred to qualified service personnel.
15. **Replacement Parts** – When replacement parts are required, be sure the service technician has used replacement parts specified by the manufacturer or have the same characteristics as the original part. Unauthorized substitutions may result in fire, electric shock, or other hazards.
16. **Safety Check** – Upon completion of any service or repairs to this product, ask the service technician to perform safety checks to determine that the product is in proper operating condition.

Questions? Service? Warranty? Visit www.ihomeintl.com

